

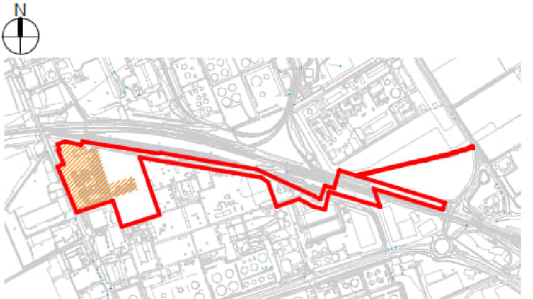
LEGEND

- New Road
- Existing Road / Equipment
- Application Boundary

NOTE:  
Contains Ordnance Survey Data © Crown copyright and  
database rights 2021 Ordnance Survey 0100031673.

REV	DATE	DRW	ING	DESCRIPTION
A	14/02/23	SJ	AEC	For Planning

Key Plan



**Advisian**  
Worley Group

**Worley**  
energy | chemicals | resources

Paseo de la Castellana 184, Madrid 28046 - Spain  
TEL: +34913 53 51 00 - FAX: +34913 50 76 15  
www.worleyparsons.com

Client  
**PHILLIPS 66** Humber Refinery

Project  
Humber Zero: Phillips 66 FCC Post Combustion Carbon Capture

Project No.  
215005-00703

Drawing title  
Proposed Carbon Capture Unit Plot Plan

Project Date	PROJ. LEAD	DEPT. LEAD
14/02/23	AP	MG

Drawing Number	Rev
215005-00703-00-AR-DXG-10001	A

NOTES

DRAWING NOT TO SCALE

ISSUE PURPOSE

FINAL

PROJECT NUMBER

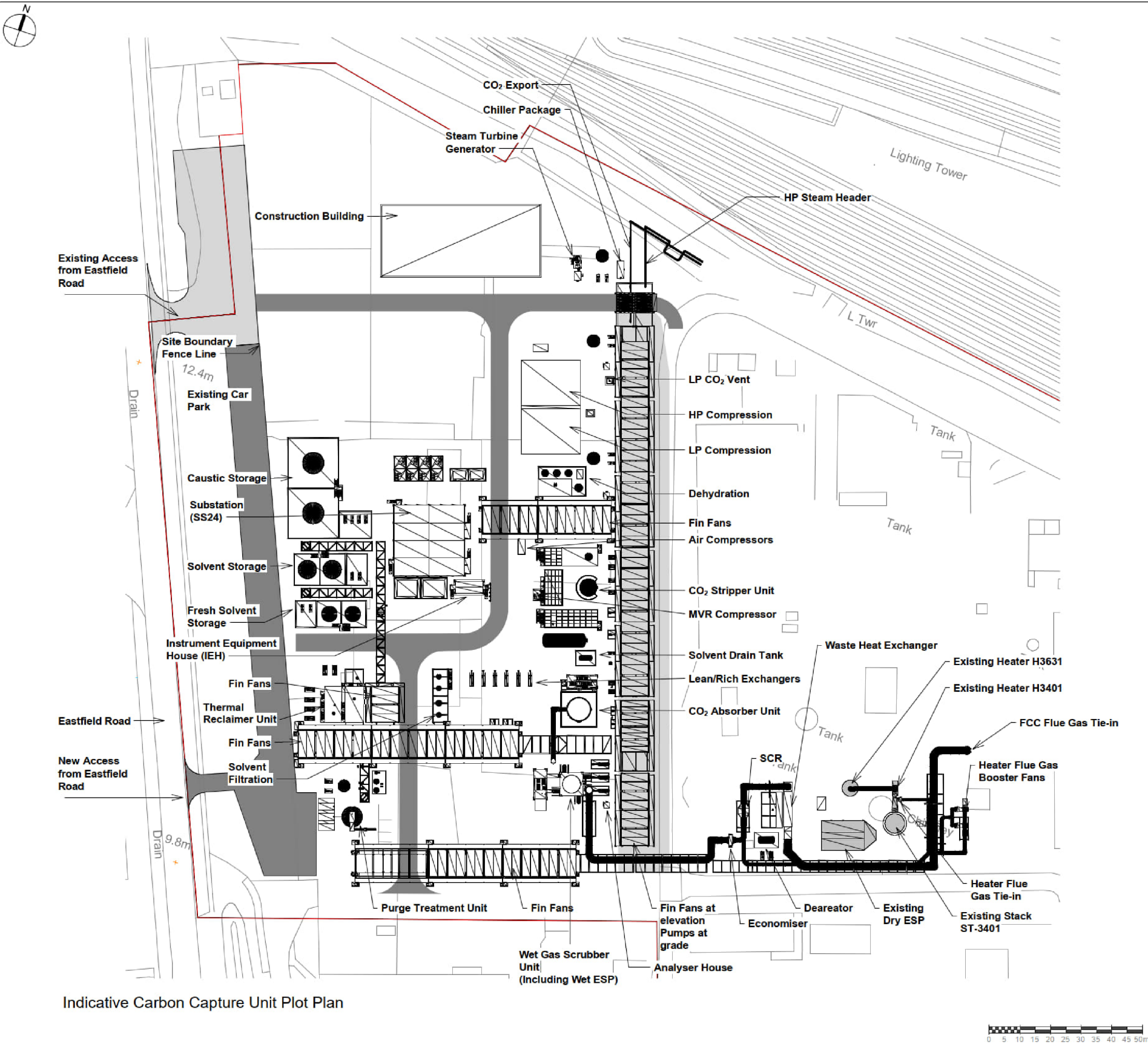
60668866

FIGURE TITLE

Proposed Phillips 66 Carbon Capture  
Plant Layout

FIGURE NUMBER

Figure 3.1



This drawing has been prepared for the use of AECOM's client. It may not be used, modified, reproduced or relied upon by third parties, except as agreed by AECOM or as required by law. AECOM accepts no responsibility, and denies any liability whatsoever, to any party that uses or relies on this drawing without AECOM's express written consent. Do not scale the drawing. All measurements must be obtained from the stated dimensions.