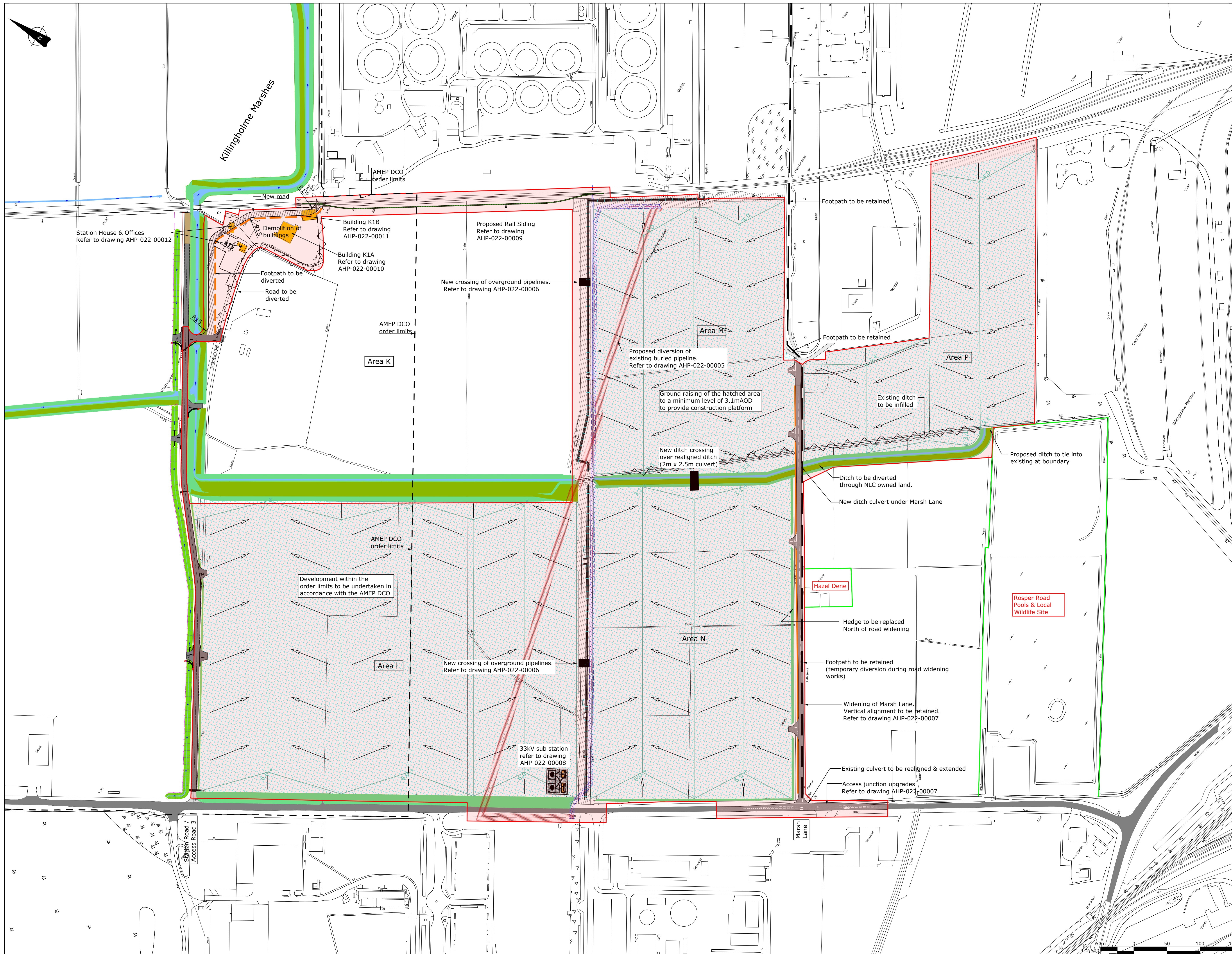


## Notes

1. Do not scale from this drawing. If in doubt - Ask.
2. All dimensions are in metres (m) unless noted otherwise.
3. All levels are in metres (m) above Ordnance Datum (mAOD) unless noted otherwise.

- Works Application Boundary
- Area of earthworks to raise ground levels
- Ridges & valleys formed to drain raised ground
- Fall direction of ground levels (min level 3.1mOD)



C	12/01/2023	Planning Application Boundary Amended	DJA	RC	RC
B	07/12/2022	Diverted Footpath Removed	DJA	RC	RC
A	10/11/2022	Issued for Planning	DJA	RC	RC
Rev.	Date	Comments	Drn	Chk	App



Project:	AHP Enabling Works South
Client:	ABLE Humber Ports Ltd.
Drawing Title:	Proposed Layout

PLANNING			
Scale:	1:2,500 @A1	Drawn By:	D Almeida
Date:	04/11/2022	Checked By:	R. Cram
Drawing No:	AHP-022-00003	Approved By:	R. Cram
Revision:	C		